

“The Problem Solvers”

Supplying Specifically Designed and Created Problem Solving Solutions.

Problem: Shuttle Car Cables being Stretched or Just Dying.

Solution: Antishock Shuttle Car Cable Anchors P/No 0052SAS

1. Minimise the force applied to repairs of Shuttle car Cables.
2. Minimise the Force applied to new Shuttle Car Cables.
3. We recommend Anchoring off A Horizontal Swivel mount See Fig 1.
4. Read and Follow the Installation Procedure Sheet.
5. Always follow your mines Isolation procedure.



P/No 0052 DSAS

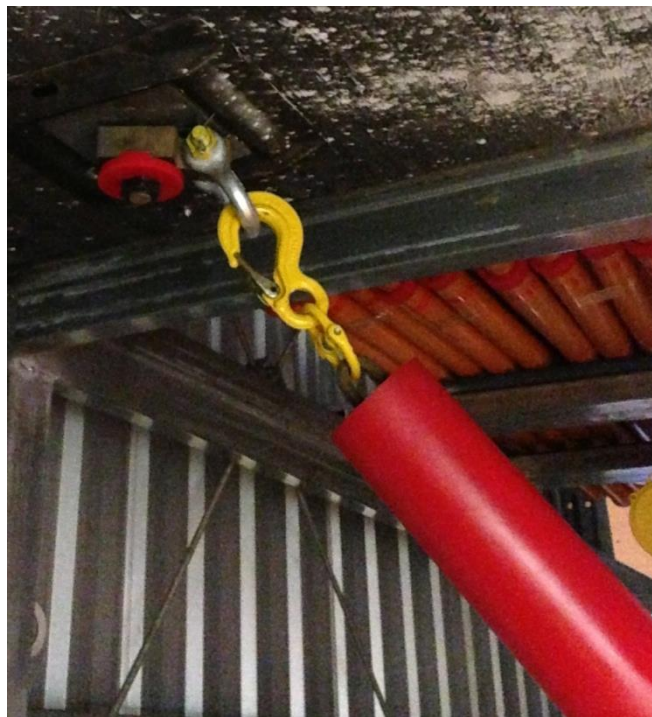


Fig 1.

P/No 0109 HSM



P/No0052 SAS

PPE to be worn at all times